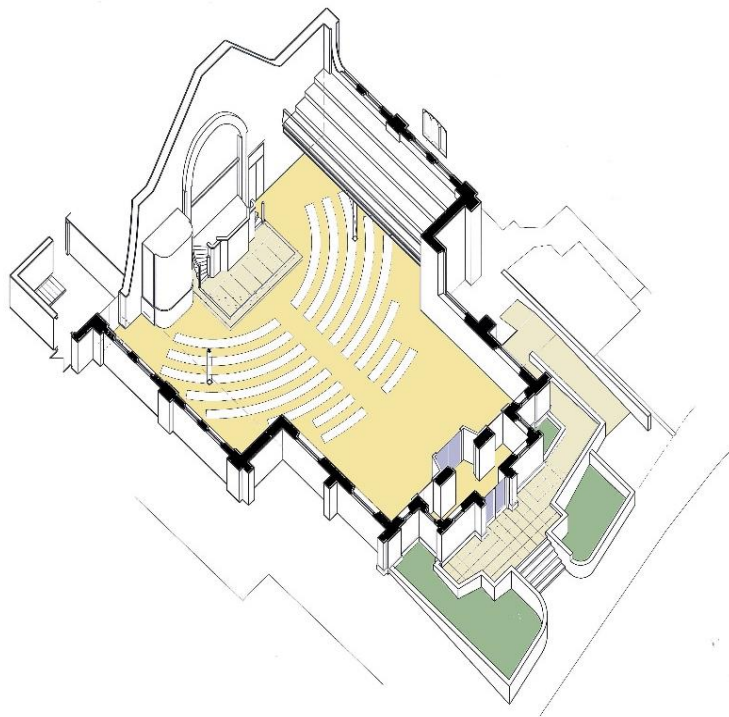


# CLARION



*"ENVISIONING OUR FUTURE"*

Wesley **Methodist** Church 

**June 2016**

**REGULAR WEEKLY MEETINGS AT WESLEY**  
**Wesley Methodist Church, Elm Road, Leigh-on-Sea, SS9 1SJ**

<b>SUNDAY SERVICES</b>	<b>9. 00am</b>	<b>Holy Communion - second Sunday in the month</b>
	<b>11. 00am</b>	<b>Morning Worship - Communion as advised</b>
	<b>11. 00am</b>	<b>The Zone on Sunday</b>
<b>MONDAY</b>	<b>10. 00am</b>	<b>Wesley Art Group</b>
	<b>8. 00pm</b>	<b>Wesley Theatre Group</b>
<b>WEDNESDAY</b>	<b>9. 00am</b>	<b>Midweek Informal Communion on the 1<sup>st</sup> Wednesday in the month</b>
	<b>10.00 – 11.30am</b>	<b>Parent and Toddler (School terms)</b>
	<b>6.00 - 9. 00pm</b>	<b>St. John Ambulance</b>
<b>THURSDAY</b>	<b>6.00 - 7.30pm</b>	<b>Synergy Youth Group (School Terms Yr. 5, 6 &amp;7)</b>
<b>FRIDAY</b>	<b>2. 00pm</b>	<b>Table Tennis 60+ (School Terms)</b>

.....

Wesley Pre-School      Karen Barnes-Austin    07572 047520

Daily Coffee Mornings.

The church concourse is open every morning between 10am and 12 noon for our coffee mornings. Everyone is welcome and you can buy a tea or coffee and a slice of cake and meet your friends, or even make some new ones.

There is always someone on duty as a listening ear, so if you need some advice they will be able to point you in the right direction, or just simply listen to what you have to say.

Traidcraft Stall is open 10am till 12 through the week and on Sunday.  
Traidcraft gives you the opportunity to buy fairly traded goods.

**FORTNIGHTLY MEETING**

Talking Poetry      alternate Wednesdays at 2. 30pm.

**OTHER MEETINGS**

Housegroup Meetings      as advised

Minister: Rev. Julia Monaghan  
1 Oakview Close, Leigh-on-Sea, Essex. SS9 4JN. Tel: (01702) 483827  
Email: revjuliamonaghan@gmail.com

**Ministerial Co-Worker: Anne Lane** Tel 01268 565644  
Email: annelane8@btinternet.com

**Children and Youth Worker: Jonathan Logan** Tel 07852 905742

**Mission Enabler for Older People: Julie Peek** Tel 01702 479804

**Administrator:** Paul McDowell. Tel 01702 711851

**Wesley Website:** [www.wesleymethodist.org.uk](http://www.wesleymethodist.org.uk)

Twitter: @leighwesleyMC Facebook: Leigh Wesley Methodist Church



## MINISTER'S LETTER

***Should we stay or should we go now? If we stay there will be trouble, if we go it will be double?***

### **The Clash 1982**

There are currently 2 programs that get me shouting at the radio and asking when will it ever end? The first is the continuing drama on *The Archers* as I long for Helen and Henry to be reunited and the second is the heated EU referendum debate, where passion and controversy are the order of the day. I long for facts, clarity and an opportunity to think in an uncluttered way.

As previously good friends fall out and disagree, I have found the ecumenical resource from The Joint Public Issues Team, *Think, Pray, Vote*, very helpful in picking out a few of the key questions and offering a biblical perspective from which to reflect. In this short editorial, I offer some pointers for reflection.

On the 23rd June, we will be asked the question *“Should the United Kingdom remain a member of the European Union or leave the European Union?”* As Christians we are called to work, live and pray for a better society, which includes taking part in the political processes that shape our lives. How then do we allow our faith to inform our answer to the referendum question?

For Jesus the greatest commandment is to *“love the Lord your God with all your heart, and with all your soul, and with all your mind,”* while the second is to *“love your neighbour as yourself.”* Our relationship with God affects the way that we relate to and live with one another. The referendum question could therefore be phrased as, *“To what extent does the European union enhance or hinder our ability to love our neighbour and, in doing so, our ability to love God?”*

Who in this context is our neighbour? Are we talking about neighbours in our local community, in the UK, in Europe or the wider world? Does economic union help our relationship with some nations while hindering others? Does the way that the EU makes laws aid or get in the way with how we work out our faith?

At the heart of the EU is the single market, laws and policies regulating trade, allowing people and business to trade freely without barriers between 28 countries. The EU’s single market area contains half a billion people and is the world’s largest trading block, importing £1.7 trillion and exporting £1.9 trillions of goods and services each year. Trade within the single market amounts for around half of the UK’s imports, exports and investment. For the single market to operate effectively, people have to be able to move between job markets, where regulations apply equally. The question is, are the benefits of the single market worth the cost?

*Think, Pray, Vote*, highlights that trade and markets have a moral element whether that’s in the distribution of wealth, the provision of work or the creation of resources. The bible highlights that we are not owners but stewards of possessions that ultimately belong to God, and we should look to use these possessions in ways that serve God, through serving those in need. So what biblical principles help to inform our perspective on trade?

How does holding the *Parable of the Talents* in tension with the exhortation to give to the poor (Luke 12: 33) move our thinking on?

Another key issue within the debate is the question of sovereignty. Who has the power to make decisions about our lives and where does accountability lie? Working together may involve giving up some of our control and the EU represents this, as 28 countries seek to cooperate over a range of policy areas. All Christian thought about sovereignty begins with the sovereignty of God. If God's love is universal then our starting point on sovereignty is one that transcends national borders. It's the idea that all other sovereignty exists under and is subject to, God's sovereignty. So where should countries or individuals surrender a degree of self-determination in order to cooperate?

Various passages in the bible point to co-operation and living in unity, whilst our individual diversity is also valued. Passages such as 1 Corinthians 12:12- 20 come to mind here, one body with many members. So do these passages of scripture affect how we see and relate to the EU? What are the ways in which working with others enables us to serve God and those around us and when can it be restrictive?

And finally there is the issue of the free movement of people. As part of their country's membership to the EU, all EU citizens are entitled to look for a job in another EU country. The free movement of people can be seen as part of the single market, allowing people to move as freely as money as well as bringing European people together. Approximately 2 million British people live in other parts of the EU, while around 2.3 million citizens of other EU countries live in the UK. Some parts of the UK have been changed by this migration pattern viewing it as providing an enriching diversity, whilst others see it as increasing pressure on the local neighbourhood.

The Bible contains stories involving the movement of people, whether it be the Israelites moving to escape famine, escape persecution or to follow God's calling. Within these stories, culture and identity are explored as a fruitful ground for blessings, both to those settling and those resident, as well as a threat physically and culturally.

*Think, Pray, Vote*, suggests we should reflect on, what do biblical stories tell us about nations, migration and the place of the stranger (Numbers 15: 15)? How does the free movement of people in the EU affect our identities and how does this relate to our identity in Christ?

May God bless you as you wrestle with these questions and seek God's grace.

**Rev Julia 18<sup>th</sup> May 2016**

***Loving God,***

*In this referendum that lies before us,*

*In the challenge of seeking an answer*

*In our differences of opinion*

*In our need to understand*

*May you guide us in our decisions?*

*Make us gracious in our disagreement*

*As we work for your grace and peace to be made known.*

*Amen*

## **CHURCH FAMILY NEWS**

### **Wedding**

Zoë Anne Chapman and Guy Thomas Whiddett are celebrating their wedding on Saturday 2<sup>nd</sup> July 2016 at 2.00pm at Wesley Methodist Church.

All friends and Church Family most welcome to join us for this service.

John & Janet Whiddett

### **Baptism**

The Baptism of Harley Jay Whiddett took place on Sunday 1<sup>st</sup> May. We send our love and every blessing to parents Kayleigh and Adam, their families and friends.

### **Birthday Wishes**

Congratulations and Happy Birthday to Jonathan Charnock who celebrated his 21st birthday on the 27th May. We hope you had a lovely day.

## **WESLEY MONTHLY MOVIE MORNING**

Friday 17<sup>th</sup> June "HARVEY" (1950) 10.30am

Elwood P. Dowd (James Stewart) is a good-natured eccentric who is a regular fixture at his neighbourhood tavern. He doesn't cause any real trouble, except for his insistence that his best friend is an invisible six-foot-tall rabbit named Harvey. Wherever Elwood goes, Harvey goes!

James Stewart gives one of his finest performances in this lighthearted film, based on the Pulitzer Prize-winning play.

"A simple, sweet & funny Movie classic"

FREE event – Refreshments will be on Sale



## AGE CONCERN COMMUNITY CLUB GOES FROM STRENGTH TO STRENGTH

Well now, what a success our new venue Wesley Methodist Church has proved to be since opening at the end of March. With a community expanding for seniors we are thrilled to be able to offer this service.

Our Club is a very happy club enjoying various activities. Please do come along we will make you feel most welcome. Every third Tuesday of the month we go out to lunch. We have some extremely interesting speakers and a full and varied diary.

Please contact: Age Concern Southend, 134 Hamlet Court Road, Westcliff-on-Sea, Essex, SS0 7LN. 01702 345373 [www.acsos.co.uk](http://www.acsos.co.uk)

Miki Le Masurier, Age Concern Southend

### Age Concern Community Club Diary Tuesdays 2 – 4pm

<b>Tues 31<sup>st</sup> May</b>	National Jazz Archive, Wesley
<b>Tues 7<sup>th</sup> June</b>	Quizzes and games, Wesley
<b>Tues 14<sup>th</sup> June</b>	Speaker Paul Fox – Bethlehem and Palestine plus Olive Wood Carvings, Wesley
<b>Tues 21<sup>st</sup> June</b>	Lunch <b>£8.50 – 3 courses</b> at <b>Sarah Moore Pub, Elm Road, Leigh</b> 12.30pm <b>Names to Miki Please + £1.</b>
<b>Tues 28<sup>th</sup> June</b>	Quizzes and games, Wesley



## Ideas Generated From Envisioning Service

The new Superintendent and Circuit Leadership Team requested in March, that the churches within the Circuit, review their missional possibilities. Wesley undertook this exercise within the context of worship and a study of Romans 12 v 1-13, on Sunday 15<sup>th</sup> May. Members of the congregation determined the aspect of *Our Calling* that most resonated for them. Their choice was between a call to *Worship, Learning and Caring, Evangelism and Service* and having identified a preference, members met with like-minded people to consider priorities for the short and medium term. Emerging from these groups, were a set of goals for further exploration and development, and these have been outlined below. A very big thank you to everyone for taking part, some interesting ideas were generated and I have ensured that everyone's have been included.

**Worship:** A desire for worship that was creative, multi-sensory and thought provoking was expressed. Raising hands in worship alongside quieter contemplation was appreciated. Early morning services and house groups were valued as was worship that embraced humour, dance, drama and beautiful music. Frustration was expressed at the lack of continuity within the circuit preaching plan system and a desire to see Sunday morning worship in a more varied format was expressed. The group also wanted to explore worship through nature, for example a spring walk with meditation; a summer service at Bradwell; a Garden Quiet Day. Once the redevelopment was complete, the group aspired to see a quiet area for contemplation and the performance space explored for worship through drama, dance, music and art. It was important that the refurbished church was a "*sacred space*" for the community, alongside a general multi purpose space.

**Learning and Caring:** Housegroups, hymns, Creative Worship, Time for healing, Synergy Youth Group, Thirsty For, Pop Up Groups for Lent, Coffee Mornings were all valued. Sunday morning worship with discussion and testimony was regarded, as long as people were supported and enabled to participate. Harmony and balance between *Being and Doing*, was seen as a priority, underpinned by the practice of seeking God's direction in prayer. Recommendations came for a Pastoral Visitor's Training Course to develop the devotional aspects of visiting, and a Faith Sharing Course to increase confidence in speaking *our stories*. Continuing support to the Youth Worker and Mission Enabler for Older People was expressed, alongside the desire to see a monthly Carers Group and daytime Bible Study Course.

**Service:** This group was motivated by the motto, *Compassion, Pray, Act* or more eloquently expressed by Wesley, “*Do all the good that you can. By all the means that you can....*” Ideas ranged from

- “ Advertising Wesley as a donation point for Food Bank and Harp
- “ Share with users of the building how they could become involved with homelessness initiatives
- “ Embracing its central location, open Wesley for public prayer at times of public crisis
- “ Co – ordinate 40 Acts of Kindness - Lent 2017
- “ Develop the web site in terms of social issues
- “ Be Circuit minded: summer night shelter; prayer group; street pastors; lobby MPs, councillors; develop overseas perspective
- “ Develop a church project to undertake together
- “ Redirect money from Building Redevelopment to social action.

**Evangelism:** Remembering that everyone needs to hear the hope that Christ offers was seen as important, along with remembering that people need to be engaged from their starting point. Listening to people’s stories to find the gospel message embedded within them was viewed positively. These could be stories of healing, exile, doubt, homecoming, resurrection, desert, rescue, forgiveness and grace. This listening may mean meeting in different places, for example hosting a “*beer and bible evening,*” away from church premises. Priority should be given to ensuring that the major celebrations were done well and were invitational. The idea of a chaplaincy to the groups that use the building and to the local shops was suggested, alongside making the church available for prayer at times of public crisis. Information on prayer and the hope that Christ offers should be readily available within the building.

## **Conclusions**

It was helpful to see that, recommendations from one *Calling*, were echoed on occasion within another. Alternatively, there were some areas of potential conflict that would require work to establish common ground. A universal theme from all the groups was the need to reflect, co-ordinate and communicate the range of activities within and associated with the church, in order to practice joined up thinking.

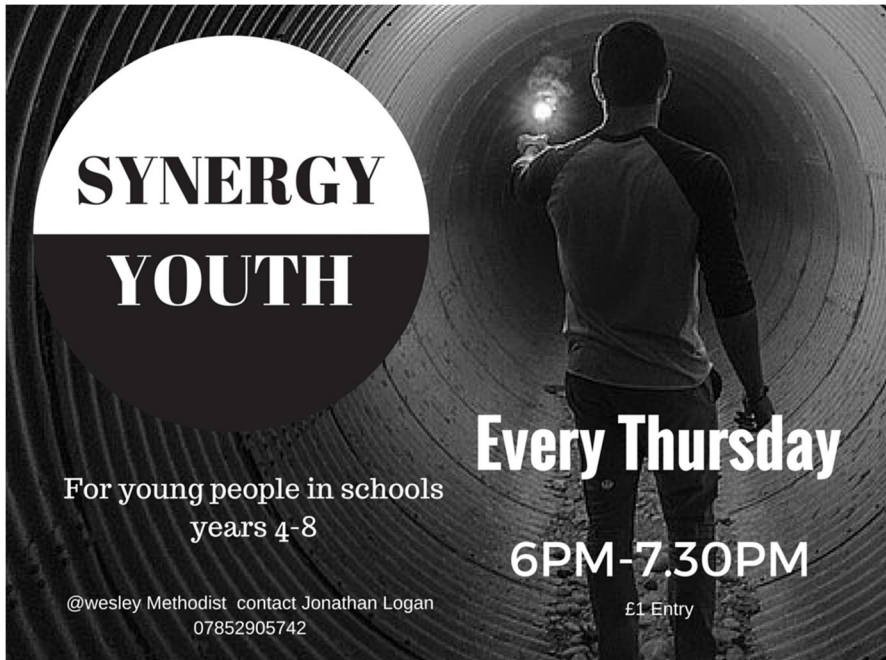
Ensuring that initiatives were followed through and priorities set were seen as important and again asking the question, what would God have us do with our gifts, talents and time?

The above will all be fed into, *Mapping Our Stories* for the Circuit Leadership Review to be held this summer. Within the church, it would be good to follow up on this wonderful start with a further meeting open to everyone. Discussion could continue alongside setting priorities and planning for the new Connexional year.

**7.30pm Thursday 30<sup>th</sup> June 2016 at Wesley**

I look forward to seeing anyone who is free to come along.

**Many Blessings Rev Julia**



**SYNERGY  
YOUTH**

For young people in schools  
years 4-8

**Every Thursday**

**6PM-7.30PM**

@wesley Methodist contact Jonathan Logan  
07852905742

£1 Entry

## WESLEY PRAYER CHAIN

A prayer chain is a way for people to gain God's assistance through prayer for any need by permitting the intercessor to pray as Jesus prayed. It is interceding or praying on behalf of one another.

We use it at Wesley to pray for the needs and emergencies of our church family, friends and those close to us in the community.

Telephone anyone below and they will set off the chain.

Gabrielle Greenway 557071 mob 07554884780

Susan Mthimkulu mob 07454011257

Isobel Wratishlaw 557764 mob 07508164525

Steve Hockett 478772 mob 07952058251

Jane Fulford

Linda Lister

June Childs 711891

Vivien Threadgold

Miriam Gifford 716175

Alison Newnham 621343 mob 07863954388

*"Pray without ceasing" 1 Thessalonians 5: 17*

## FLOWER ROTA FOR JUNE

6 <sup>th</sup>	Flowers given by Mike Bucke and the family in loving memory of Rita.
13th	Flowers given by Marion Rumble in loving memory of Tony, Peggy and Rhoda.
20th	Flowers given by Betty Bambury in loving memory of Alan.
27th	Flowers given in loving memory of Ivy Harnden and her friend Ethel Butler given by Gerald.

## **JUNE PRAYER DIARY**

Wed 1            We pray for Worship Academy and our speaker Jane Leach. May we learn even better ways of leading worship and being a channel of your love.

Thurs 2            Today, O Lord, we pray for Your blessing on us, as we seek to witness to the eternal truth of our Christian Faith.

Fri 3            We praise and thank you O God for all the saints, who have been part of Wesley Methodist church here in Leigh throughout its glorious history

Sat 4            We thank you, O Lord, for the regular Saturday, Time for Prayer, which acts as a powerhouse for this and the wider church.

Sun 5            We thank you, O Lord, for our two churches, Highlands and Wesley and the joy of shared worship together on the first Sunday of the month.

Mon 6            Today we pray for ever closer collaboration with Wesley pre school as they prepare for a change in leadership.

Tues 7            In this quiet time who pray for those who will come to Wesley for Coffee Time in which they will be welcomed, shown warm hospitality and offered a listening ear. Thank you, O Lord, for the faithful service of our volunteers, who provide this much appreciated witness and service.

Wed 8            We are blessed at Wesley by those, who work with youngsters and their families. Our buildings come alive with the presence of toddlers and their parents or carers. Be with them all today.

Thurs 9           Synergy Youth is amazing. Praise and thanks for the work and commitment of Jonathan and his team. We pray that as a result young Christians will be grown and nurtured.

Fri 10            As we prepare for the Church Celebration weekend we pray for ourselves that we may give to You, O Lord, the praise and the glory.

Sat 11            On this first day of our Church Celebration weekend we give thanks for Our Queen as we celebrate her 90th Birthday. Her declared Christian Faith has sustained her throughout her life of service. May we seek to be as committed.

Sun 12            Come and join the celebration, it's a very special day.  
*Singing the Faith number 196*

The next three prayers are from *A book of prayers* compiled by Sophie Piper.

Mon 13           Father, forgive us the wrongs we have done, As we forgive the wrongs that others have done to us.  
*(based on Matthew 6 v. 11)*

Tues 14           Give me a place of refuge, a place of healing, a place of forgiveness.

Wed 15           Father God, Gather us all into a circle of friendship and circle us about with your love.

Thurs 16        We come to you, O Lord, in prayer. We wait upon you, in the quiet. Speak to us and guide us in your ways.

Fri 17           Dear Father God, everything we have comes from You. Today may I use my time wisely, in Your service.

Sat 18           We praise and thank You O Lord for a Time for Healing here at Wesley. Bless those who come together today.

Sun 19           We thank You O Lord for fathers. May we seek Your blessing on them.

Mon 20        Grace comes into the soul, as the morning sun into the world; first a dawning, then a light; and at last the sun in his full and excellent brightness.

*Thomas Adams*

Tues 21        Plenteous grace with thee is found,  
Grace to cover all my sin;  
Let the healing streams abound,  
make and keep me pure within.

*Charles Wesley*

Wed 22        As a deer longs for flowing streams, so longs my soul for you, O Lord.

*Psalms 42 v1*

Thurs 23       Lord, let me not live to be useless.

*Charles Wesley*

Fri 24            O God, help us to be masters of ourselves that we may become servants of others, and thus follow in the path of thy blessed son Jesus Christ our Lord.

*Alec Paterson*

Sat 25            Forgive our greed and carelessness in taking care of your world.

Sun 26            O for a thousand tongues to sing  
                     my great Redeemer's praise,  
                     the glories of my God and King,  
                     the triumphs of his grace.

*Charles Wesley*

Mon 27            God help us to live slowly: To move simply: To look softly: to allow emptiness: To let the heart create for us. Amen.

*Michael Leunig*

Tues 28            This day, Lord, may I dream your dreams;  
                     this day, Lord, may I reflect your love;  
                     this day, Lord, may I do your work;  
                     this day, Lord, may I taste your peace.

*A.A.*

Wed 29            Come into my soul, Lord, as the dawn breaks into the sky; let your sun rise in my heart at the coming of the day.

*Traditional*

Thurs 30            We pray Lord for those who will come to our Afternoon tea for the over sixties. Help us to let them know how valued they are. We praise and thank you for those who offer your love and care in this mission.



**CELEBRATION TEA FOR THE QUEEN'S 90th BIRTHDAY**  
**SATURDAY 11th JUNE 3pm - 5.30pm**

As part of our celebration weekend we will take time to celebrate  
Her Majesty the Queen's 90th birthday.

We will begin with a quiz on the tables followed by a sing-a-long with live music

Tea will be traditional afternoon tea: sandwiches, scones and cakes with a royal theme.

There will be a display of books, photos and memorabilia representing our Queen's life. If you have any items or stories of our Queen, please bring them along to share. Whilst not compulsory, if you wish you can wear red, white and blue and /or tiara or crown.

Whilst this is a BDRF fundraiser we hope it will be a fun social occasion celebrating our amazing Queen's 90 years.

Cost £7.50. Tickets available from June Childs, Gaye Greenway or Paul McDowell in the office from 14th May





**ON SUNDAY**

## **IMPORTANT DATES FOR THE DIARY**

12th June	Church Celebration Weekend
10th July	Sports Day
17th July	Picnic

## **RISE AND SHINE**

Methodist Young Leaders event for 16-23 year olds.

This event will take place at Cliff College in Derbyshire from 24th - 26th June.

Rise and Shine will come at a cost of £60, plus the cost of trains to and from Chesterfield station. We are looking for Church leaders and youth workers to identify young people with leadership potential to come and engage in discussions and leadership training. The weekend will be grounded in prayer and other forms of worship and is an exciting opportunity hosted by Methodist Youth President Craig Gaffney.

If you are interested please speak to Jane Fulford or Rev Julia

## **3Generate**      25-27<sup>th</sup> Nov 2016

In November 2015, we took a group of 9 young people from Hockley Methodist Church to the national Methodist Youth event called 3Generate.

They haven't stopped talking about it since! 3Generate replaced the Youth Conference, and is held at the PGL site in Swindon. There were over 600 young people there, in 3 age groups 8-11, 11-18 and 18-23s. We are hoping to take a larger group from the circuit in November 2016. Have a think if there are any young people in your church that may benefit from a weekend away to see that there are other children and young people in the Methodist church across the country. In the meantime have a look at

[www.3generate.org.uk/](http://www.3generate.org.uk/)

Rev Phil Warrey



**Allegro ....at the movies Concert**

**Saturday 16<sup>th</sup> July 7.30pm**

**Highlands Methodist Church, Sutherland Boulevard SS9 3PT**

Our summer season 'Allegro at the movies' will be an evening of wonderful music, from traditional choral arrangements to popular modern composers and hit musicals.

Allegro was established in November 2013 by a group of friends. All the members are experienced singers; each has sung with some of the other members in various choirs and societies, now they are enjoying singing together as one choir.

The aim of Allegro is to have fun rehearsing a wide repertoire of music and to present high quality concerts which will raise funds for charitable causes. In the first two years they have raised £7,400 for various charities and community groups.

The concert at Highlands Methodist Church will raise funds for the refurbishment of the sanctuary area at Highlands and The Southend Huntingdon's Disease Society.

Please contact Anne (01268 565644 or [annelane8@btinternet.com](mailto:annelane8@btinternet.com)) or Ros (01702 478631) to buy your tickets which are priced £10.

Tickets can also be bought on the door.



The 2016 Week of Accompanied Prayer

**From Sunday 9<sup>th</sup> – Sunday 16<sup>th</sup> October, the Leigh Section will be joining with St Clements to hold a Week of Accompanied Prayer.**

### **Why are we having a Week of Accompanied Prayer (WAP)?**

The purpose of such weeks is to encourage people in their prayer lives by providing an opportunity to reflect each day on their prayer, in the company of a prayer guide, or companion. What an individual participant experiences, over the course of the week, will be unique to them. For example, one may learn different ways in which to pray, another be helped to overcome a difficulty they have with prayer and someone else may simply begin to pray regularly for the first time. Often people experience a new or deeper meaning in their prayer and a greater awareness of God's presence in their daily lives.

### **It sounds like a retreat. If I take part, do I have to go somewhere special for the whole week?**

A WAP is like a retreat but it doesn't involve going away for the week. Each day you will meet with your guide for thirty minutes either at one of the section churches or at St Clements. You will be invited to set aside thirty minutes to pray on your own each day. For the rest of the time the activities of your day continue as they would normally whilst feeding into and being fed by prayer.

### **Who are the Prayer Guides?**

The team of prayer guides may include women and men of various denominations, some lay, some ordained and possibly some members of religious orders. All will have received training in helping others in their prayer. The role of the guide is mainly to listen: to accompany the participants during the week, encouraging each person to honour his or her own prayer and to be aware of how it may be developed.

### **Does the WAP cost anything?**

Although the WAP is free to join, the week will cost in the region of £500 to put on and therefore we suggest that you consider making a donation of £5 to £10 to contribute to these costs.

### **Where can I get more information?**

Between June and the beginning of October more information will be available through:

- Leaflets at the back of church
- Meetings: 11am 9<sup>th</sup> July St Clement's  
8pm 28<sup>th</sup> July Wesley Methodist

These meetings will explain how the week works and answer other questions that you may have. You are invited to attend the meeting which is most convenient for you.

**If you are uncertain whether the WAP is for you, please feel free to talk with Rev Julia.**

### **Some feedback from participants in the WAP last year:**

*Before the WAP I was nervous and not sure if I was doing the right thing for me. I am grateful to the WAP for making me aware of the benefit of a dedicated time for prayer. Before the WAP my feelings and expectations were that something suitable for me and my needs was being offered. It helped me to become more aware of the presence of God within and around me.*

*I am grateful to the WAP because it has cleared my head of unnecessary "gabbling" at prayer and has shown me the value of silence and how God really speaks to me in the silence!*



# Summer

## Nites

An Event  
for young people  
aged 8-14  
with various activities



# Chip

Kendall



# Jelz

Music

## July 21st-23rd

6pm till 8pm

£5 per young person

for Booking information contact Jonathan Logan 07852905742

Benfleet Methodist, 67 High Road, Benfleet, SS7 5LH

## **SUMMER TIME AFTERNOON TEA AND CAKES**

CANTEEN ROOM (ROOM 3)

THURSDAY AFTERNOONS 2-4PM

June 30<sup>th</sup>

July 21<sup>st</sup>

August 25<sup>th</sup>

September 29<sup>th</sup>

October 27<sup>th</sup>

Our 60+ tea and cake afternoons are starting up again on Thursday 28<sup>th</sup> April. We will offer a welcome break from shopping in the Broadway or simply a time to chat and meet friends old and new. The cost will be £1.00 for tea, coffee or juice plus a choice of delicious cakes. Stay all afternoon or pop in for a while – bring your friends.

Janet Whiddett

## **HELPING HANDS**

The following contacts from our wider church family may be able to help if you are struggling with housework, gardening or odd jobs?

Gardening Services and Odd Jobs	Steve Hockett	07952 058251
Help with Housework	Sam	07776 302635
	Becky	07841 052764
Painting, decorating & Odd Jobs	Mark Wiltshire	01702 475089



## TIME FOR HEALING

Time for Healing Prayer Group continue to meet as usual, generally on the third Saturday of each month between 11.30am - 12.30pm. Meetings are typically attended by ten to twelve people with the majority often being from outside our usual church membership. The format usually includes prayers of thanksgiving and intercession, together with a short meditation on the theme of healing. This is followed by the opportunity for private prayer with one or more of the group leaders.

It is always good to see the meeting of the churchgoers who turn up and those lovely people who just come off the street, as it is open to anyone. So please come and join us if you can, and give, receive, or just take much needed time out. The next meetings are planned for the following dates:

- Saturday 18<sup>th</sup> June
- Saturday 16<sup>th</sup> July
- Saturday 20<sup>th</sup> August
- September date TBA

Please note: because of the building works, the July and August meetings will be held in Room 3 (the Canteen Room) instead of the Church. Advice will be given as to the venue for future meetings as soon as it is known.

Terry Harper



## WESLEY BUILDING FUND TEAM NEWS

Many thanks to all who contributed to the Spring Fair and the Sunday lunch – an amazing £936 was raised. Another £100 was raised from the Waitrose Cookery Demonstration.

Our main event for June is the **Queen's Birthday Tea** on Saturday 11<sup>th</sup> June at 3pm. See full description page. Tickets from June or Gabrielle.

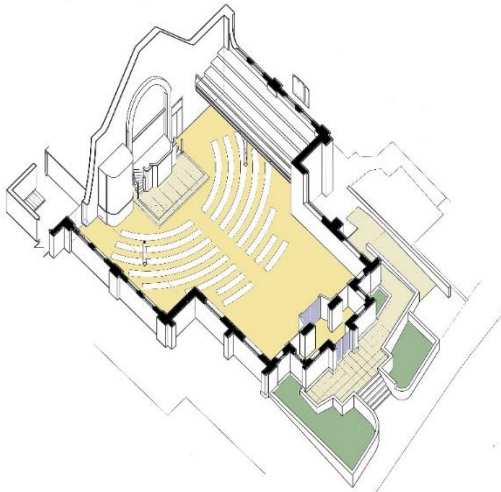
We are still looking for offers for a summer tea at your home/garden please let us know if you are able to host an afternoon.

In July we hope to have a Tea Dance and there will be quizzes and competitions over the summer time. Watch out for details on the notice sheet and in the Concourse.

### When is your garden at its prettiest?

Why not open it up for an afternoon for the Building Fund? Offer tea perhaps or have a raffle and make some money! See Gabrielle or June to organise advertising.

Gabrielle 01702 557071 or June 01702 711891



**SUNDAY 29<sup>th</sup> MAY**

NO SERVICE AT WESLEY

(United Service held at 10.30 Highlands Methodist Church, Sutherland Blvd)

Mon 30<sup>th</sup>      BANK HOLIDAY

Wed 1<sup>st</sup>      9.00am      Midweek Communion – Wesley

10.00am      Synergy Movie “The Peanuts Movie”

Sat 4<sup>th</sup>      10.00am      Coffee Morning

11.30am      Time for Prayer

**SUNDAY 5<sup>th</sup> JUNE**

11.00am      Preacher: Rev Julia Monaghan

Porch: Eileen Simmons

Mon 6<sup>th</sup>      10.00am      Wesley Art Group

Wed 8<sup>th</sup>      9.00am      Midweek Communion - Belfairs

10.00am      Parent and Toddler

2.30pm      Talking Poetry (subject beginning with S)

Thurs 9<sup>th</sup>      6.00pm      Synergy

Fri 10<sup>th</sup>      2.00pm      Table Tennis 60+

Sat 11<sup>th</sup>      10.00am      Coffee Morning

11.30am      Time for Prayer

3.00pm      Queens 90<sup>th</sup> Birthday Celebration Tea

**SUNDAY 12<sup>th</sup> JUNE      CHURCH CELEBRATION SUNDAY**

	11.00am	Preacher: Rev Julia Monaghan Porch: Margaret Buckey
Mon 13th	10.00am	Wesley Art Group.
Weds 15 <sup>th</sup>	7.30pm	CAMEO Housegroup
Thurs 16 <sup>th</sup>	6.00pm	Synergy
Fri 17th	10.30am	Movie Morning "Harvey"
	2.00pm	Table Tennis 60+
Sat 18th	10.00am	Coffee Morning
	11.30am	Time for Healing

**SUNDAY 19th JUNE**

	11.00am	Preacher: Lieut. Colonel Roy Girling Porch: Helen Boyd
Mon 20th	10.00am	Wesley Art Group
Tues 21st	8.00pm	Church Council meeting
Wed 22nd	9.15am	Midweek Communion - Fishermen's Chapel
	2.30pm	Talking Poetry (subject beginning with T)
Thurs 23rd	6.00pm	Synergy
Fri 24th	2.00pm	Table Tennis 60+
Sat 25th	10.00am	Coffee Morning

**SUNDAY 26<sup>th</sup> JUNE**

	11.00am	Preacher: Mrs Susan Mthimkulu Porch: Alison Newnham
Tues 28 <sup>th</sup>	8.00pm	Informal Worship, Isobel Wratishlaw
Thurs 30 <sup>th</sup>	2.00pm	Summer Afternoon Tea & Cakes

## FORWARD EVENTS

Weds 1 <sup>st</sup> June	10.00am	Synergy Movie "The Peanuts Movie"
Sat 11 <sup>th</sup> June	3.00pm	Queen's 90 <sup>th</sup> Birthday Celebration Tea
June 11 <sup>th</sup> & 12 <sup>th</sup>		Wesley Celebration Weekend
Fri 17 <sup>th</sup> June	10.30am	Wesley Movie Morning "Harvey"
Sat 18 <sup>th</sup> June	11.30am	Time for Healing
Tues June 21 <sup>st</sup>	8.00pm	Church Council meeting
Thurs 30 <sup>th</sup> June	2.00pm	Summertime Afternoon Tea & Cakes
Mon 4 <sup>th</sup> July	BUILDING DEVELOPMENT WORK STARTS	
Oct 9 <sup>th</sup> -16 <sup>th</sup>		Week of Accompanied Prayer

## JULY/AUGUST CLARION

Items for the July/Aug Clarion should be emailed to [julie.peek@hotmail.co.uk](mailto:julie.peek@hotmail.co.uk) or placed in the folder outside the vestry by **SUNDAY 19th JUNE 2016**



Wesley Methodist Church is a member of Southend and Leigh Circuit  
[www.southendandleigh.org](http://www.southendandleigh.org)  
and part of the

**Beds, Essex and Herts District of the Methodist Church**